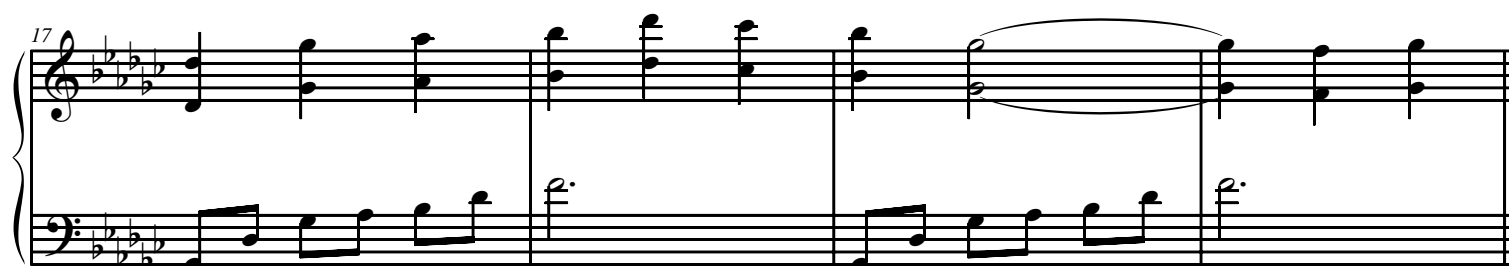
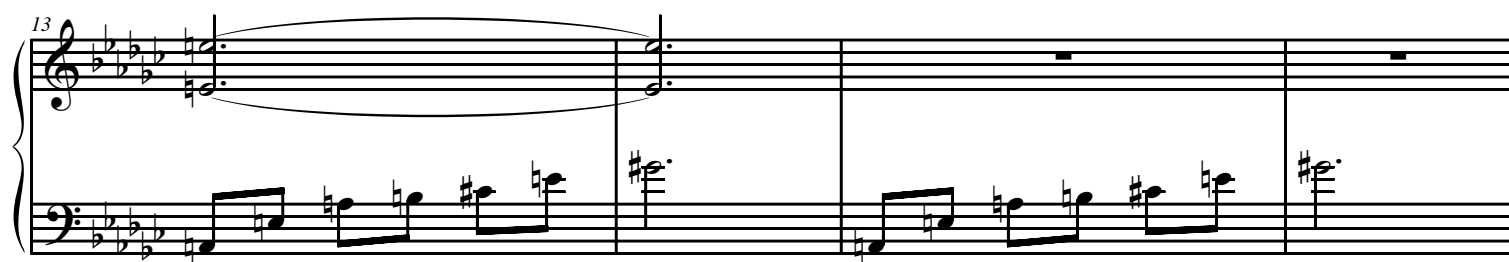
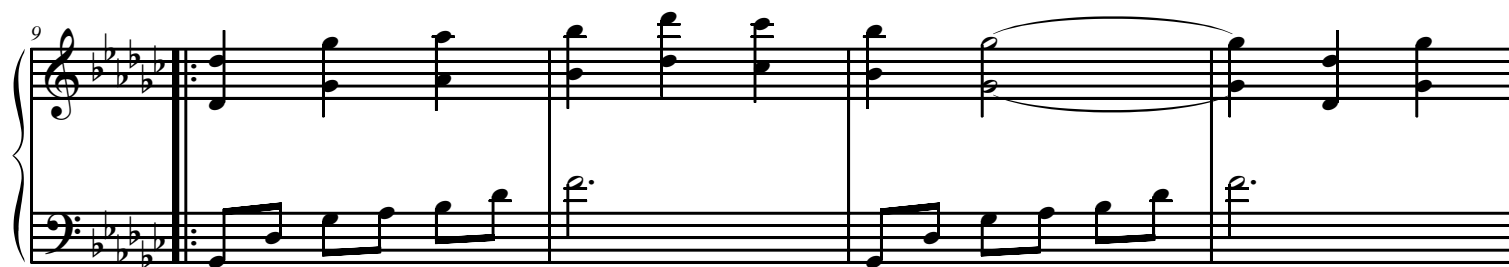
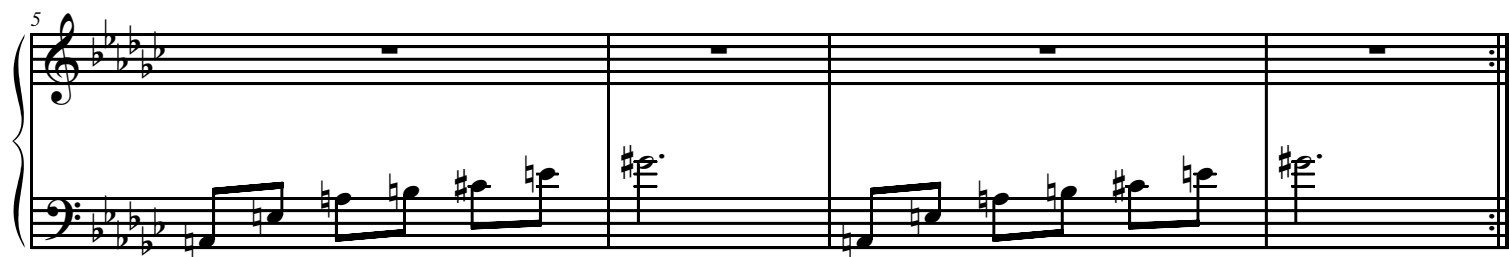
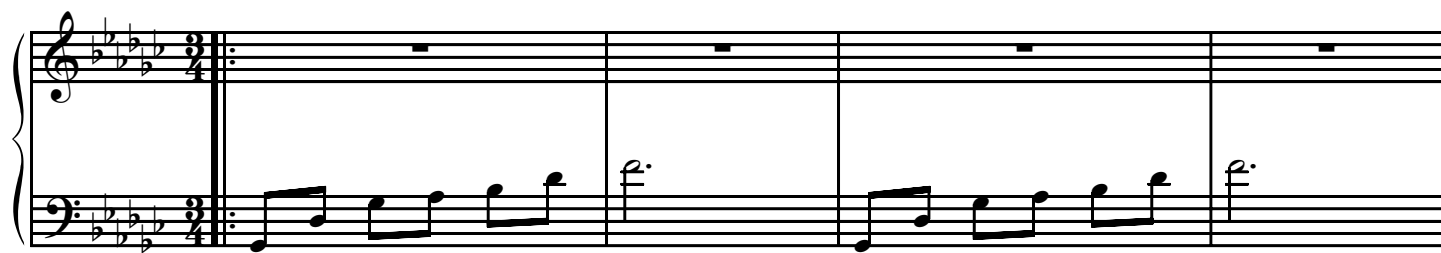


Zelda Twilight Princess Lake Hylia

Composed by
Taru Minegishi
Arranged by
Nezkeys79

♩ = 112



21

1.

First ending (1.) spanning measures 21 to 24. The treble clef staff features a melodic line with a sharp sign, while the bass clef staff contains a rhythmic accompaniment. The key signature is three flats (B-flat, E-flat, A-flat).

25

2.

Second ending (2.) spanning measures 25 to 28. The treble clef staff features a melodic line with a sharp sign, while the bass clef staff contains a rhythmic accompaniment. The key signature is three flats (B-flat, E-flat, A-flat).

29

Measures 29 to 32. The treble clef staff features a melodic line with a sharp sign, while the bass clef staff contains a rhythmic accompaniment. The key signature is three flats (B-flat, E-flat, A-flat).

33

Measures 33 to 36. The treble clef staff features a melodic line with a sharp sign, while the bass clef staff contains a rhythmic accompaniment. The key signature is three flats (B-flat, E-flat, A-flat).

37

Measures 37 to 40. The treble clef staff features a melodic line with a sharp sign, while the bass clef staff contains a rhythmic accompaniment. The key signature is three flats (B-flat, E-flat, A-flat).

